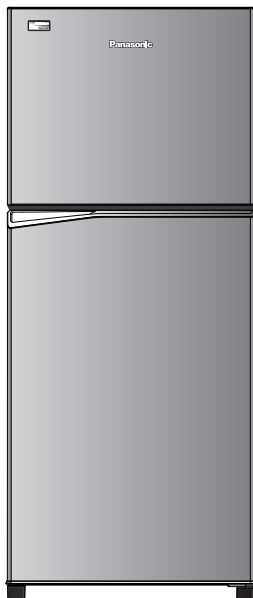




# Panasonic®

## Operating Instructions Refrigerator

For Household Use



Model No.: **NR-BL302**  
**NR-BL342**

### Contents

• Safety precautions.....	2
• Usage precautions.....	4
• Installation .....	6
• Parts identification .....	7
• Temperature control.....	7
• Usage tips.....	8
• How to make ice cubes with ice maker .....	9
• How to clean the refrigerator .....	9
• Troubleshooting .....	11
• Specifications .....	12

#### ■ NON-CFC

This unit uses totally **NON-CFC MATERIALS** both for refrigerant (R600a) and for insulation (Cyclo-Pentane). So, this refrigerator does not damage the Earth's ozone layer.

Thank you for purchasing the Panasonic product.

- Please read these instructions carefully and follow safety precautions on page 2-5 before using this product.
- Please make sure the date and name of store of purchase are stamped in warranty card and keep it with this operating instructions.

NZ

ARAH1E202080  
P0520-0  
Printed in Vietnam

## Safety precautions

Please be sure to follow these instructions.



### WARNING

This sign means: It may lead to a serious injury or death.



These signs mean prohibited action.



This sign means required action.



This sign means the appliance must be earthed to prevent electric shock.



### CAUTION

This sign means: It may result in injury or property damage.



iso-butane

Risk of fire / flammable materials

Otherwise it may cause a fire, injury, electrical shock.



## WARNING

### When using...



- **Do not** damage the cooling circuit (piping on the back).
- **Do not** touch the compressor and pipes, because of high temperature, that there is a risk of burn injury.
- **Do not** let any children hang onto the refrigerator's door, it may overturn to the kid.
- **Do not** place any water container on the top of the refrigerator in case the spilling water causes electrical shock or combustion.
- **Do not** locate multiple portable socket-outlets or portable supplies at the rear of the appliance.
- Keep ventilation openings, in the appliance enclosure or in the built-in structure, clear of obstruction.



- This appliance is not intended for use by persons (including children) with reduced physical, sensory or mental capabilities, or lack of experience and knowledge, unless they have been given supervision or instruction concerning use of the appliance by a person responsible for their safety.
- Children should be supervised to ensure that they do not play with the appliance.

### When recycling the product...



- Before taking the refrigerator to be recycled, please remove all the door opening seal to prevent locking a child in it.
- The warning labels mentioned above should be kept throughout the life of the refrigerator.
- The operating instructions should be handed over to any person who would use or handle the refrigerator whenever the refrigerator would be transferred to another location and delivered to a recycling plant.
- Regarding to local laws, Cyclo-Pentane is used for insulation of this refrigerator. When you throw away this unit, please discard it by proper method and do not dispose it by burning.

Otherwise it may  
cause a fire, injury,  
electrical shock.



# WARNING

## For power plug and cord...



- **Do not** plug or unplug with wet hands.
- **Do not** let the cord or plug be damaged.



- Disconnect power plug when cleaning.
- Plug into a wall outlet of the rated voltage on its own with the rated current and insert plug fully.
- Reserve one socket for the refrigerator only. Avoid connecting many appliances to the same socket and unroll through the length of cord.
- Remove dust periodically from the power plug.
- If the supply cord is damaged, it must be replaced by the manufacturer, its service agent or similarly qualified persons in order to avoid a hazard.
- If you detect burning smell, disconnect the power plug and ventilate the kitchen.
- **Stop** using the refrigerator and unplug the unit immediately if there is an abnormality or failure. Abnormality and failure examples:
  - Power cord or plug is abnormally hot.
  - Power cord is deeply cut or deformed.
  - There is burning smell.
  - You can feel tingling electricity.

## In case of emergency...



- Maintenance work only be carried out at workshop by well-trained maintenance worker.



- **Do not** store explosive substances such as aerosol cans with a flammable propellant and chemicals or scientific specimens in the appliance.
- **Do not** use electrical appliances such as a deodorizer in the refrigerator. Leaked refrigerant may catch fire from a spark of the electrical contacts and may cause an explosion.
- **Do not** use electrical appliances inside the food storage compartments of the appliance, unless they are of the type recommended by the manufacturer.



- **Do not** disassemble, repair or modify the refrigerator by yourself. If you want to repair the refrigerator, please consult your dealer or authorized service center.
- **Do not** use mechanical device or other means to accelerate the defrosting process, other than those recommended by the manufacturer.

## When installing...



- Fix the refrigerator to avoid danger due to unbalance.
- When positioning the appliance, ensure the supply cord is not trapped or damaged.



- Ensure that the refrigerator is plugged into an earthed mains socket.

Otherwise it may cause injury, accidents.

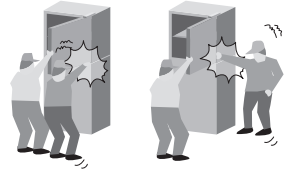


## CAUTION

### When opening/closing the doors...



- While opening the refrigerator, be careful not to pinch other one's hand holding the door.
- Mind the gap between the doors. They may nip your hand while closing the door.



### When storing food...



- **Do not** freeze glass bottles, that there is a risk of injury. (If the liquid in a glass bottle is frozen, then the bottle may break and you may be injured.)
- **Do not** add a high impact on glass trays. (Otherwise those glass trays may break and you may be injured.)



### When moving the refrigerator...



- Hold the refrigerator tightly when transporting.
- Apply protective covering, etc. to floors with a fragile surface.



## Usage precautions

### When opening/closing the doors...

- **Do not** refrigerate items which are bigger than tray or shelf, as the door will not close completely causing leakage of cool air.
- **Do not** open refrigerator frequently or leave it open for long time in order to prevent water dripping inside and waste energy.
- Frequently check the door opening seal, it must be closed to the refrigerator's body completely.

### When cleaning...

- **Do not** clean the refrigerator with chemical substance or liquid. It will cause damage and have corrosion on the surface.
- Clean the pan water evap located over the compressor at the back of the refrigerator every three months to prevent the odour generated from humidity.



# Usage precautions

## When using...

- When the plug is disconnected, leave it for 5 minutes before plugging again. If not, the compressor may not work.
- Adjust the temperature according to the actual operating condition for energy saving.
- The humidity inside the fresh case may condense so wipe it with a cloth periodically. Clean the fresh case once a month.
- If you will not be at home for several days and there are nothing refrigerated in the refrigerator, the plug should be disconnected for energy saving.
- The outside wall of refrigerator cabinet may sometimes get warm, especially just after installation. This is quite normal, and is due to the built-in Mullion Dryer Pipe which prevents sweating and radiates heat.
- When humidity is high, e.g. during rainy-season, condensation may appear on the surface of cabinet, especially around the door seal gasket. Wipe off the condensed water with a clean cloth.
- **Do not** keep the door open any longer than necessary, particularly in hot, humid weather.



## When storing food...

- **Do not** place warm/hot foodstuff in the refrigerator.
- **Do not** overload the refrigerator. Gap must be provided between foodstuffs to maintain the cooling effect.
- Store fruits and vegetables in vegetable case, where trapped moisture helps preserve food quality for longer time periods.
- Drinking water, beverage bottles should be sealed to prevent odor contamination.
- Foodstuff such as vegetable, fruits and fresh food should be wrapped or pack in box before freezing and refrigerating.
- Put the food such as meat or fish in the freezer if you want to store for an extended period.
- Cover juicy food with tight lids, plastic film or foil.
- Cool hot dishes in room temperature before placing them in your refrigerator.



## SPECIAL FEATURE

### 1) ECONAVI

The microchip performing ECONAVI mode is integrated into the main control board. By detecting refrigerator's frequency of use (opening and closing of door), ECONAVI mode automatically operates to save energy.

### 2) INVERTER

In accordance with temperature change inside the compartment, the motor of compressor runs at different speed. When the temperature is stable, the motor runs at a lower speed (energy saving & lower noise). When powerful cooling is required, the motor runs at a higher speed.

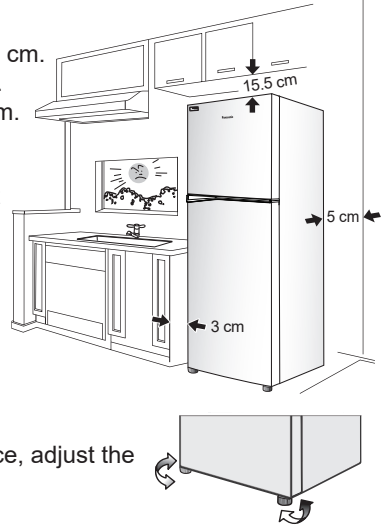
# Installation

## The distance requested for installation

- The top of the refrigerator and the ceiling at least 15.5 cm.
- The back of the refrigerator and the wall at least 5 cm.
- The sides of the refrigerator and the walls at least 3 cm.

## Area around the installed unit

- **Do not** locate the refrigerator in a humid place as rust may form and may cause electric leakage.
- **Do not** locate the refrigerator exposing to direct sunlight as the heat and sunlight will increase the temperature.
- **Do not** locate the refrigerator near heat source such as cooking stove or oven.
- **Do not** block the openings around the refrigerator.
- The refrigerator must be located in the place where there is good air circulation.
- In case of placing the refrigerator on an uneven surface, adjust the adjustable bolt to make the refrigerator stands stably.



## Moving or shifting

- When moving or shifting the refrigerator, remove ice cube tray, box ice tray, pan water evap etc. and check to be sure that there is no water in the refrigerator.

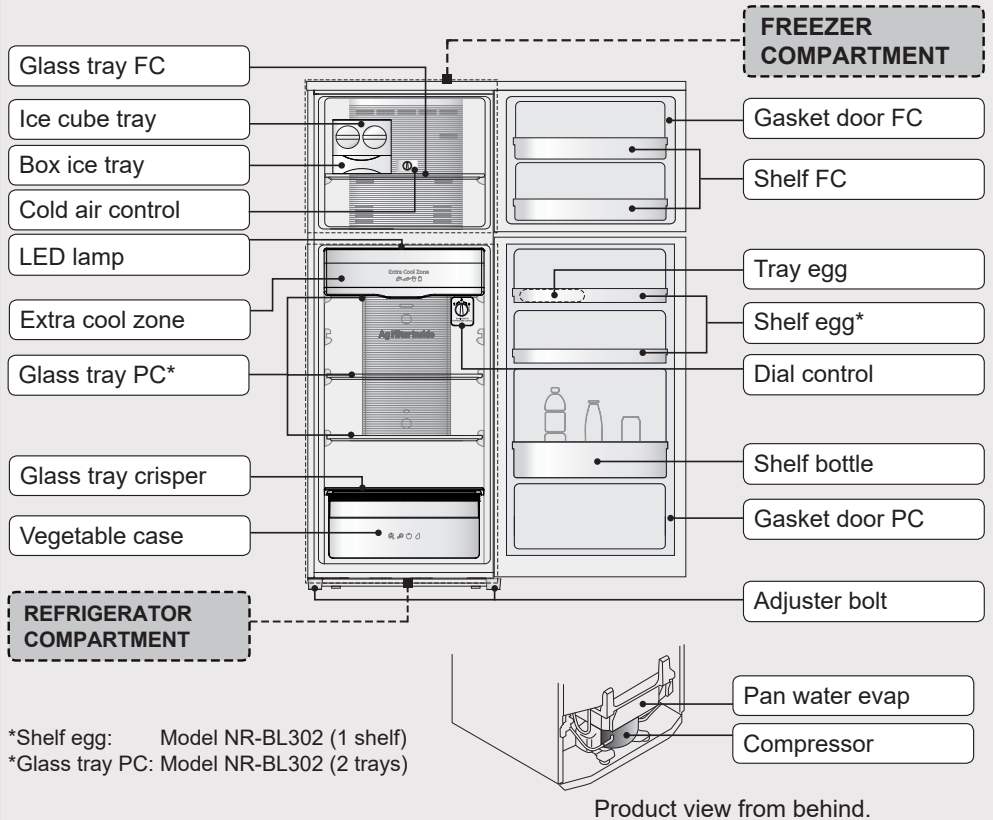
## Power cord setting

- To bring power cord for use, pan water evap from left should be lifted up. Then bring the power cord out and then insert pan water evap into the block by pressing at both the sides.

## LED lamp and grounding

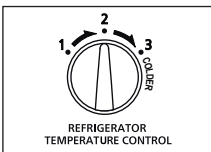
- The refrigerator LED lamp, specially designed for this refrigerator, does not function on individual replacing. If you need replacement, please contact Panasonic Service Center.
- If there is no grounding wiring plug in refrigerator, it should be connected with grounding connection to prevent electrical hazard from electric leakage.

# Parts identification



# Temperature control

Operate the REFRIGERATOR TEMP. CONTROL when changing the temperature of REFRIGERATOR COMPARTMENT.



TEMP. CONTROL REFRIGERATOR COMPARTMENT	
"1"	Higher than "2" by approximately 2°C ~ 3°C
"2"	Approximately 3°C ~ 5°C
"3"	Lower than "2" by approximately 2°C ~ 3°C

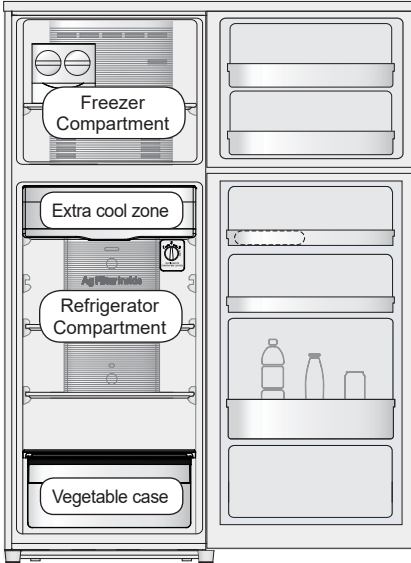
Operate the COLD AIR CONTROL when changing the cold air condition.



COLD AIR CONTROL	
"REFRIGERATOR MAX"	REFRIGERATOR COMPARTMENT takes priority
"NORMAL"	Cold air condition is normal
"FREEZER MAX"	FREEZER COMPARTMENT takes priority

**Note:** Temperature of Refrigerator depends on environment, room temperature and food storage quantity.

# Usage tips



(NR-BL342)

## Freezing

**“If storing food for an extended period...”**

For storage of frozen or dried foods.



## Refrigeration

**“Food and drinks readily served...”**

For regular storage of food and drinks or temporary storage of those to be served soon.



## Extra cool zone

**“Dairy products...”**

For dairy products, etc. that perish easily but whose quality changes if frozen.



## Vegetable case

**“Fruits and vegetables”**

A rather high humidity keeps fruits and vegetables fresh and juicy.



## Storage using hermetically sealed containers is recommended!

To prevent the interior from being discolored!



- Cut citrus fruits  
(→ The plastic will be discolored white.)

To prevent odors from spreading!



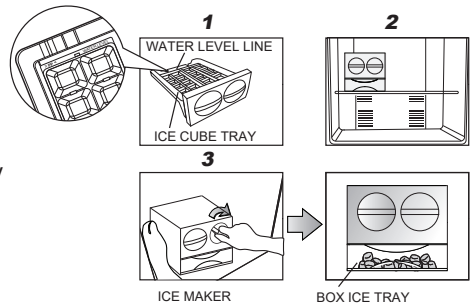
- Garlicky or other strong smelling vegetables  
(→ Odors will spread to other nearby food.)



# How to make ice cubes with ice maker

## STEP

1. Fill water in the ice cube tray till the water level line.
2. Put ice cube tray inside Freezer room, wait until ice is made.
3. To remove ice cubes, suppress the frame with left hand and twist the dial ice cube tray clockwise with right hand. The ice cubes will drop into the box ice tray.



## Remark:

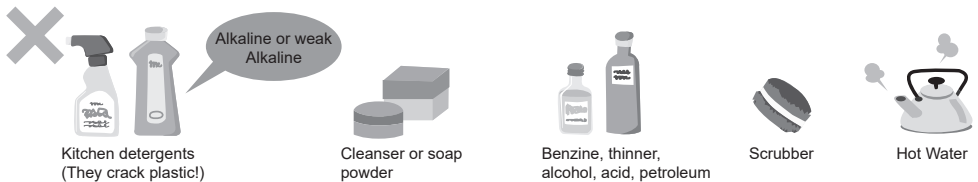
- Don't pour water into ice box for ice-making, otherwise the box may crack.

# How to clean the refrigerator

- 1 Interior cleaning**  
Wipe off the stain with warm water. When stains can not be removed easily, wipe them with warm water and soap by using a soft cloth.  
Then wipe the soap off using damp soft cloth.
- 2 Exterior cleaning**  
Cleaning by using soft cloth with warm water and soap.  
Then wipe off the soap with warm soft cloth.
- 3 Gasket door FC/PC**
  - Clean by wiping gently. This area, petroleum gel was applied to reduce the friction to the refrigerator body. Be careful not to wipe off them.
  - The door opening seal is replaceable when reaching end of life. While cleaning, push it back to the groove if it comes off.



**Note:** Do not use the following items. (Otherwise, the surface will be scratched.)

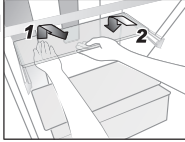


# How to clean the refrigerator

## Removing glass tray PC / FC, glass tray crisper for cleaning

### • Removing

1. Lift the tray upward then pulling it forward until removing.



### • Attaching

2. Place tray on both supporters, then push until it reaches the end.

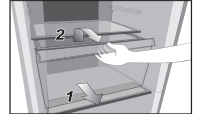
### Remark:

- When removing tray above vegetable case, pull out the vegetable case first and then follow to remove the tray as above details.
- In case of attaching the tray and it does not lock, make sure that you did not attach the wrong tray.
- Make sure that you don't attach the upper side of the tray downward.
- Two PC Glass trays can be used alternatively, but Glass tray crisper should only be attached right above crisper case.

## Removing vegetable case for cleaning

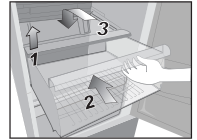
### • Removing

1. Pull the case until it reaches the end of stopper.
2. Raise up the front of case a bit and then completely take out.



### • Attaching

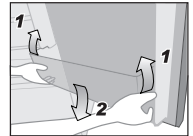
1. Keep the lid on the vegetable case lifting until case is attached.
2. Raise it up and place case on both supporters.
3. Push the case until it reaches the end.



## Removing shelf egg, shelf bottle, shelf FC for cleaning

### • Removing

1. Lift it upward, alternating between the right and left side.



### • Attaching

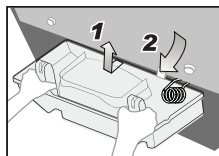
2. Place it on both supporters, and then press until it reaches the end of supporters.

## Removing pan water evap for cleaning

### • Removing

1. Tilt up the pan water evap a bit and then lift it upward until the pan water evap hole unlocks from the pan water evap hook.

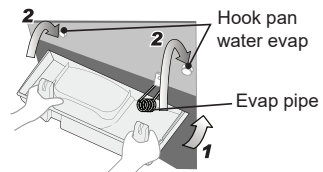
2. Pull the pan water evap until it touches with the evap pipe then carefully take it out under the evap pipe.



### • Attaching

1. Insert the pan water evap under the evap pipe.
2. Insert the pan water evap hole into the hook pan water evap as well as press-fitting both sides.

**Remark:** Check the status to make sure evap pipe does not touch the pan water evap.



# Troubleshooting

Before you call for service, please check the following items:

**The refrigerator does not operate.**

- Check that the plug and its socket are in good condition.
- Check if there is any problem on main fuse and electrical system of the house.
- Check by unplug and wait for 5 minutes before plugging it back in.

**The refrigerator does not cool enough.**

- Check to be sure that the temperature control dial is at proper position.
- Check to see if the refrigerator is overloaded with stuff or there is any hot foodstuff refrigerated inside.
- Is the refrigerator exposed directly to sunlight or heat source?
- Is the refrigerator door completely closed?
- Is the refrigerator door opened frequently?

**Dew, snow appear.**

**Outside**

- When the ambient humidity is too high, the door gasket may have dew. This situation will be stopped if the air humidity decreases. Please wipe it up with dry cloth.

**Inside**

- Is the door closed firmly?
- Is the door being opened and closed too frequently?
- When too high weather humidity, long opening time or making too much ice, inside the freezer compartment may appear frozen snow. This is normal. Please wipe with dry and soft cloth.



**The refrigerator makes noise.**

- Check if the refrigerator is located on a stable floor or is installed properly.
- Check if there is any object in contact with the refrigerator.

**Food becomes frozen.**

- Do you put the food near cold air holes?
- Do you adjust the temperature control at "Max"? Adjust to "Min"?
- Do you put food in extra cool zone?

**The inside is smelling.**

- Do you store food with dry odor without wrapping it?

**The surfaces of the refrigerator is hot.**

- Because the refrigerator is equipped with the dew prevention and heat radiation tubes, the surfaces of the refrigerator get warmer when operating.
- The back and side plates may get warmer especially when starting up or if the door is frequently opened and closed.

# Troubleshooting

The normal sounds of refrigerator.

- When the refrigerator starts operation, the sound like water flowing and boiling water is created. This is the sound of the cooling liquid.
- The noise is generated when the automatic defrost system operated.
- The dilatation of the details inside the refrigerator in the cooling process can cause sound “crack-crack”.
- You may feel that the operation sound is larger because the compressor operates in high-speed under the following conditions: the refrigerator does not cool fully on the occasion such as using it for the first time, opening/closing the door too frequently, the surrounding temperature is high. The sound becomes more quiet after cooling fully.

Lamp does not turn on.

- Please contact Panasonic service center.

# Specification

Model No.		NR-BL302	NR-BL342
Group		5T	
Gross Capacity (L) (AS/NZS 4474.1:2007 AS/NZS 4474.2:2009)	Total	288	325
	Freezer	98	
	Refrigerator	190	227
Outside Dimensions Width x Depth x Height (mm)		601 x 657 x 1,505	601 x 657 x 1,645
Net Weight (kg)		47	50
Refrigerant Type		R600a	
Rated Voltage (V) Rated Frequency (Hz)		Refer to the rating label attached inside the cabinet.	

**Panasonic Corporation**

Website: <http://www.panasonic.com>

© Panasonic Appliances Vietnam Co., Ltd. 2020